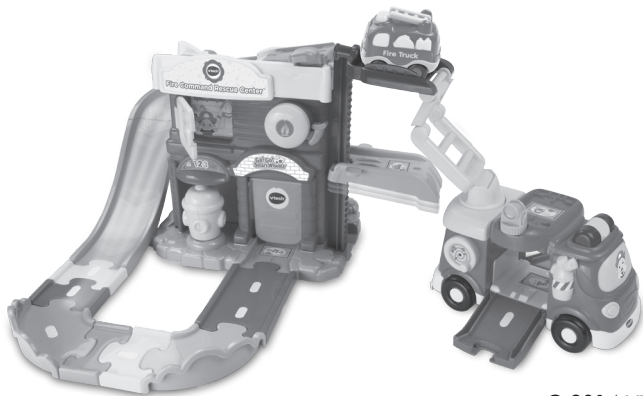


vtech[®]

User's Manual

Go! Go! Smart Wheels[®]
Playtime with miles of learning!

Fire Command Rescue Center™



© 2014 VTech
Printed in China

91-009683-001 US

Dear Parent,

Welcome to the world of **Go! Go! Smart Wheels**®! We're excited you've decided to ride along with us and explore all that **Go! Go! Smart Wheels**® has to offer. These toys have been designed to give your child a thrilling learning experience with hours and hours of fun as well.

Go! Go! Smart Wheels® features vehicles that interact with your child by lighting up, singing and talking, while teaching your child letters and vehicle names (each sold separately). There are other surprises in store, too! With our innovative **SmartPoint**™ technology, available exclusively on **Go! Go! Smart Wheels**® playsets (each sold separately), your child will smile as they hear **SmartPoint**™ vehicles respond to each unique **SmartPoint**™ location with singing, sound effects and fun phrases.

Our **Go! Go! Smart Wheels**® playsets also feature buttons, gears and other mechanical features to encourage the development of your child's fine motor skills. Many of the playsets also have tracks that can be arranged in endless ways, stimulating your child's creativity. In addition, many of the **Go! Go! Smart Wheels**® playsets connect to other playsets in the collection, so there's no end to what your child can do!

With **Go! Go! Smart Wheels**®, it's playtime with miles of learning!

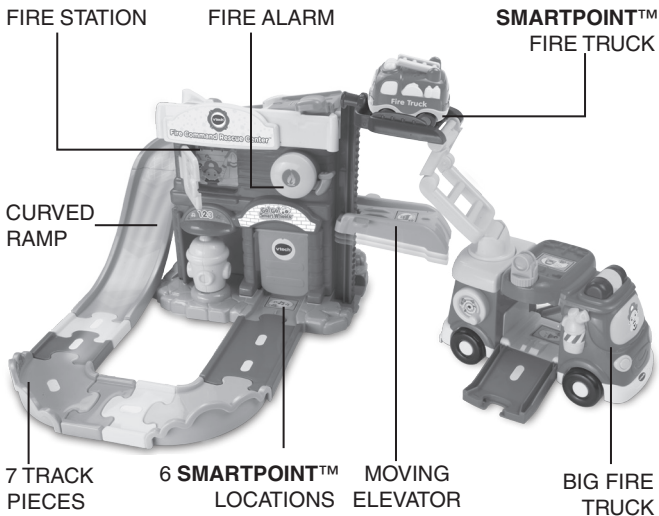
Sincerely,
Your friends at **VTech**®

To learn more about **VTech**® toys, visit www.vtechkids.com

INTRODUCTION

Thank you for purchasing the **VTech® Go! Go! Smart Wheels® Fire Command Rescue Center™** playset learning toy!

Deploy the two fire trucks to save lives and put out fires! The **Go! Go! Smart Wheels® Fire Command Rescue Center™** features lots of manipulative features including a launcher, turning fire hydrant, elevator and much more.



INCLUDED IN THIS PACKAGE

- One user's manual



- One **Go! Go! Smart Wheels®** big fire truck
- One **Go! Go! Smart Wheels® SmartPoint™** fire truck
- One fire station building
- One fire station base



- One elevator
- One fire hydrant
- One curved ramp piece
- One straight ramp piece



- One straight track
- One female connector track
- Two 90-degree tracks
- Three male/female connector tracks

WARNING: All packing materials, such as tape, plastic sheets, packaging locks and tags are not part of this toy, and should be discarded for your child's safety.

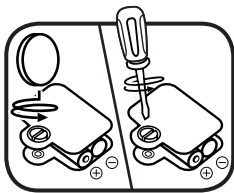
ATTENTION: Pour la sécurité de votre enfant, débarrassez-vous de tous les produits d'emballage tels que rubans adhésifs, feuilles de plastique, attaches et étiquettes. Ils ne font pas partie du jouet.

NOTE: Please keep this user's manual as it contains important information.

GETTING STARTED

BATTERY INSTALLATION

1. Make sure the unit is turned **OFF**.
2. Locate the battery cover on the bottom of the **SmartPoint™** fire truck. Use a coin or a screwdriver to loosen the screw.
3. Install 2 new 'AAA' (AM-4/LR03) batteries following the diagram inside the battery box. (The use of new alkaline batteries is recommended for maximum performance.)
4. Replace the battery cover and tighten the screw to secure.



BATTERY NOTICE

- Use new alkaline batteries for maximum performance.
- Use only batteries of the same or equivalent type as recommended.
- Do not mix different types of batteries: alkaline, standard (carbon-zinc) or rechargeable (Ni-Cd, Ni-MH), or new and used batteries.
- Do not use damaged batteries.
- Insert batteries with the correct polarity.

- Do not short-circuit the battery terminals.
- Remove exhausted batteries from the toy.
- Remove batteries during long periods of non-use.
- Do not dispose of batteries in fire.
- Do not charge non-rechargeable batteries.
- Remove rechargeable batteries from the toy before charging (if removable).
- Rechargeable batteries are only to be charged under adult supervision.

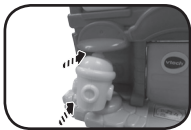
ASSEMBLY INSTRUCTIONS

With the VTech® Go! Go! Smart Wheels® Fire Command Rescue Center™, safety comes first. To ensure your child's safety, adult assembly is required.

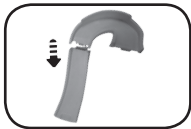
1. **Assemble the fire station:** Slide the elevator onto the groove on the side of the fire station building. Then, attach the fire station building to the station base as shown.



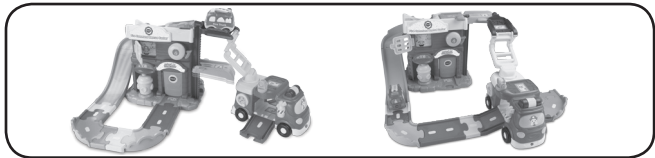
2. **Attach the fire hydrant:** Attach the fire hydrant to the fire station base as shown. You will hear a click sound when it locks into place.



3. **Assemble the ramp:** Connect the curved and straight ramp pieces together. Attach the curved ramp piece to the top of the fire station.



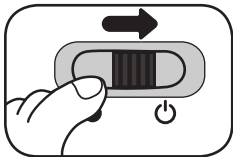
After the above steps, connect these pieces to the seven included track pieces. You can configure them into different shapes.



SMARTPOINT™ FIRE TRUCK FEATURES

1. ON/OFF SWITCH

To turn the unit **ON**, slide the **ON/OFF SWITCH** on the **SmartPoint™** fire truck to the **ON (⏻)** position. To turn the unit **OFF**, slide the **ON/OFF SWITCH** to the **OFF (●)** position.



2. AUTOMATIC SHUT-OFF

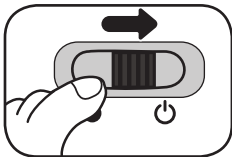
To preserve battery life, the **VTech® Go! Go! Smart Wheels® SmartPoint™** fire truck will automatically power-down after approximately 60 seconds without input. The unit can only be turned on again by pressing the light-up button or pushing the small fire truck quickly.

NOTE: This product is in a try-me mode in the packaging. After opening the package, turn the vehicle off and on again to proceed with normal play.

NOTE : Ce produit est actuellement en mode démonstration. Une fois déballé, veuillez éteindre puis remettre en marche ce jouet pour activer toutes ses fonctionnalités.

SMARTPOINT™ FIRE TRUCK ACTIVITIES

1. Slide the **ON/OFF SWITCH** to turn the unit **ON**. You will hear fire truck sounds, a song and a phrase. The light will flash with the sounds.



2. Press the **LIGHT-UP BUTTON** to hear fire truck sounds, songs and phrases. The light will flash with the sounds.



3. Push the fire truck to hear fun sounds and melodies. While the melody is playing, push the fire truck again to add in fun sounds on top of the melody. The light will flash with the sounds.

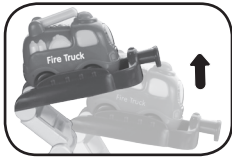
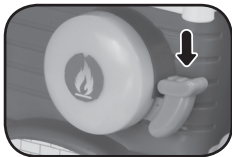
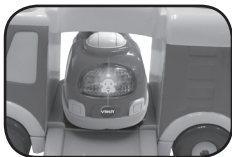


4. For added fun, the **SmartPoint™** fire truck interacts with **VTech® Go! Go! Smart Wheels®** playsets. Simply roll the fire truck over one of the playset's **SmartPoints™** to see the fire truck's light flash and to hear greetings, fun sounds, short tunes and sing-along songs (each playset sold separately).



FIRE STATION AND BIG FIRE TRUCK ACTIVITIES

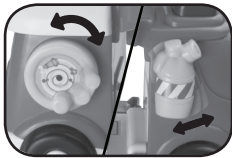
1. Drive the **SmartPoint™** fire truck over the playset's six **SmartPoints™** to trigger fun sounds, phrases and sing-along songs.
2. Slide the **FIRE ALARM** lever to hear a mechanical alarm sound.
3. Move the **ELEVATOR** up and down to lift the **SmartPoint™** fire truck to the top of the station!
4. Launch the **SmartPoint™** fire truck down the **CURVED RAMP** and pretend to race to an emergency!
5. Load your **SmartPoint™** fire truck onto the big fire truck to help it get around. Use the ladder to lift up the **SmartPoint™** fire truck.



6. Press the big fire truck's button to hear beeping sounds.



7. Move the fire hose and fire extinguisher on the big fire truck.



CARE & MAINTENANCE

1. Keep the unit clean by wiping it with a slightly damp cloth.
2. Keep the unit out of direct sunlight and away from any direct heat source.
3. Remove the batteries when the unit will not be in use for an extended period of time.
4. Do not drop the unit on hard surfaces and do not expose the unit to moisture or water.

TROUBLESHOOTING

If for some reason the program/activity stops working or malfunctions, please follow these steps:

1. Please turn the unit **OFF**.
2. Interrupt the power supply by removing the batteries.
3. Let the unit stand for a few minutes, then replace the batteries.
4. Turn the unit **ON**. The unit should now be ready to play again.
5. If the product still does not work, replace with a new set of batteries.

If the problem persists, please call our Consumer Services Department at 1-800-521-2010 in the U.S. or 1-877-352-8697 in Canada, and a service representative will be happy to help you.

For information on this product's warranty, please call **VTech®** at 1-800-521-2010 in the U.S. or 1-877-352-8697 in Canada.

IMPORTANT NOTE:

Creating and developing **Infant Learning** products is accompanied by a responsibility that we at **VTech®** take very seriously. We make every effort to ensure the accuracy of the information, which forms the value of our products. However, errors sometimes can occur. It is important for you to know that we stand behind our products and encourage you to call our Consumer Services Department at 1-800-521-2010 in the U.S. or 1-877-352-8697 in Canada, with any problems and/or suggestions that you might have. A service representative will be happy to help you.

Note:

This equipment has been tested and found to comply with the limits for a Class B digital device, pursuant to Part 15 of the FCC Rules. These limits are designed to provide reasonable protection against harmful interference in a residential installation. This equipment generates, uses and can radiate radio frequency energy and, if not installed and used in accordance with the instructions, may cause harmful interference to radio communications. However, there is no guarantee that interference will not occur in a particular installation. If this equipment does cause harmful interference to radio or television reception, which can be determined by turning the equipment off and on, the user is encouraged to try to correct the interference by one or more of the following measures:

- Reorient or relocate the receiving antenna.
- Increase the separation between the equipment and receiver.
- Connect the equipment into an outlet on a circuit different from that to which the receiver is connected.
- Consult the dealer or an experienced radio/TV technician for help.

Caution: Changes or modifications not expressly approved by the party responsible for compliance could void the user's authority to operate the equipment.

THIS DEVICE COMPLIES WITH PART 15 OF THE FCC RULES. OPERATION IS SUBJECT TO THE FOLLOWING TWO CONDITIONS:
(1) THIS DEVICE MAY NOT CAUSE HARMFUL INTERFERENCE, AND
(2) THIS DEVICE MUST ACCEPT ANY INTERFERENCE RECEIVED, INCLUDING INTERFERENCE THAT MAY CAUSE UNDESIRE OPERATION.

CAN ICES-3 (B)/NMB-3(B)

